



# **PMT TANK** **BROCHURE**

---

PMT Tank is an Efficient and Advanced  
Tool for Storage Tank Design &  
Engineering

## PMT TANK IS AN EFFICIENT AND ADVANCED TOOL FOR STORAGE TANK DESIGN & ENGINEERING

### FEATURES/CAPABILITIES

1. Welded Storage Tank Design
2. EN 14015
3. API 650 – 13th Edition, Annex A, Annex S, Annex J
4. Shell Course thickness calculations (1-Foot Method / Variable-Design-Point Method)
5. Wind Pressure calculation
6. Wind girder Design calculations
7. External Pressure Design calculations
8. Wind calculations / Seismic calculations
9. Self-supported / Supported Cone & Dome Roof Design calculations
10. Uplift and Anchor Design calculations
11. Insulation Weight calculation
12. Counterbalance calculation
13. Foundation load data
14. Nozzle Neck thickness calculations
15. Nozzle Local Load Calculations
16. Impact testing check
17. Cleanout Door & Manhole Calculations
18. Plates Material Take-off (MTO)
19. (Standard / Custom) Material Library
20. Step by Step Detailed Calculations
21. Proper Code References with Clauses, Tables & Flow charts
22. Calculations performed in real time with design validations.
23. Download detailed calculation report in PDF and Word format. User can also download Tank Datasheet ( API 650 Annex L format) in a click.
24. Download Tank GA drawing in dwg format

### PMT TANK – PROCESS

1. Tank Sizing
2. Venting (as per API 2000) : NRV, ERV, PVRV
3. Heating Coil Design
4. Inlet Diffuser Sizing

### PMT TANK – CIVIL

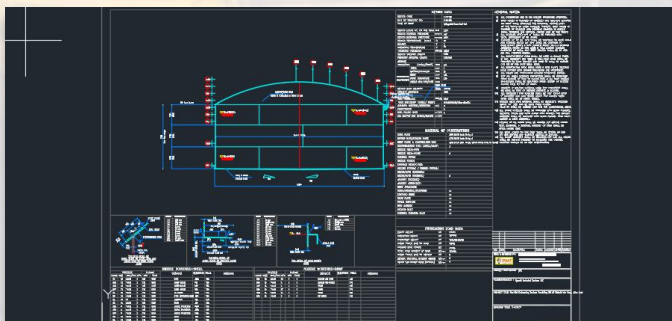
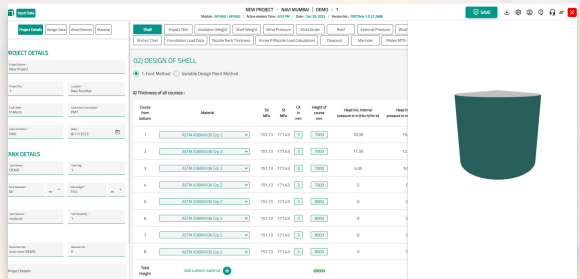
1. Tank Civil Foundation Design

### PMT TANK – FLOATING ROOF

1. Floating Roof design as per API 650 Annex c

### PMT TANK – GA DRAWINGS

1. Designs converted into GA Drawings



## SUBSCRIPTIONS

### 03 Months

### 12 Months

### Enterprise

## WHY PMT TANK?



### Improve Productivity

Expert Tank Engineers are always in short supply. PMT Tank helps make the most of Engineers valuable time by providing calculations as per code and inputs specified by clients.



### Easy to Use

PMT Tank is designed to be user-friendly for a Tank Engineer who is well-versed with using computer systems. No special training is required.



### High Accuracy

PMT Tank helps Engineers navigate through constant upskilling of Code revisions, good engineering practices, advances in computing, etc. and avoid Code related errors and omissions.



### Save Time & Cost

A complete Tank design can be performed in less than 2 hours. Save costs upto 10 to 20 times of the cost incurred by using Traditional Design practises.



### Flexible Subscription

Users can choose to opt for 3 months or 12 months' subscription based on their project requirement.



### Download Reports & GA drawings

Design output ( pdf & word ), tank data sheet ( excel ) & GA drawing ( dwg ) download in a click of a button.

## INDUSTRIES SERVED

- Tank Terminals
- Power Plants
- Water Treatment
- Oil & Gas
- Utilities
- Fertilizer Plants
- Refinery & Petrochemicals
- Chemical Plants
- Pharmaceuticals



## ABOUT US

P-Mech Technologies (PMT) is dedicated to revolutionizing the Energy and Industrial sectors on a global scale. With over 35 years of expertise and experience in engineering and design for 1000s of customers, we are at the forefront of developing innovative software products that transform traditional design practices.

[www.pmechtech.com](http://www.pmechtech.com)

For more information : [info@pmechtech.com](mailto:info@pmechtech.com)

For enquiry : [sales@pmechtech.com](mailto:sales@pmechtech.com)